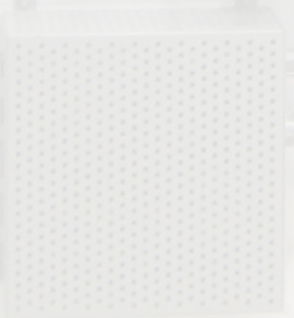


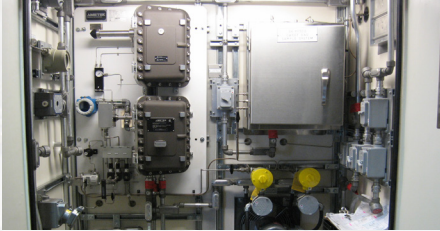
AMETEK



± SABRE



Continuous Emissions Monitoring Systems (CEMS)

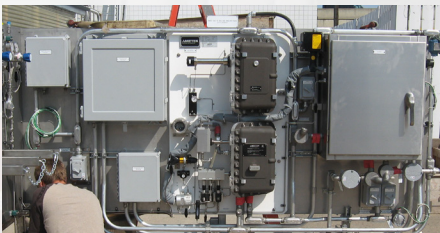
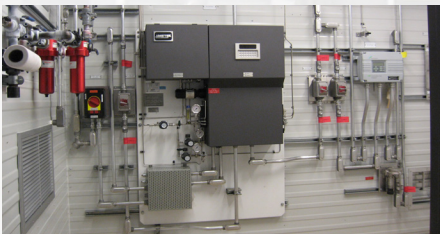


OUR TEAM

Continuous Emission Monitoring System (CEMS) Code was first published in 1998. The CEMS Code establishes requirements for the installation, operation, maintenance and certification of continuous emission monitoring systems.

These requirements will ensure effective measurement, recording and standardized reporting of specified emissions and other parameters.

For over 20 years Sabre has designed and integrated continuous emissions monitoring systems for a variety of industrial users. We have an experienced team that has designed and managed all types of CEMS systems and flue gas stack analyzing projects. Our facility is headquartered in Calgary, Alberta with over 30,000 sq ft of indoor manufacturing space, 3 acres of secured yard area, and staging and testing areas. Sabre holds and maintains CSA, COR, ABSA and ISO 9001:2015 certifications.



PRODUCT INFORMATION

Tail gas air demand analyzers

Flue gas O2 analyzers

Hot/wet multi gas mass flow CEM

SO2 analyzers

H2S analyzers

CO2 analyzers

NOx analyzers

Dew point analyzers

CEMS Analyzer Buildings



INDUSTRY STANDARDS

CSA 22.1

CSA 22.2

CSA SPE-1000

ABSA

ANSI

ASTM D4057-22

ISO 9001:2015

ISA

NFPA 496

NFPA 70

API RP 500

API RP 505